



—“
“grotesque”
“„“

arabesque“”



Raphael and his workshop, The Loggia, 1517-19, Palace of the Vatican.



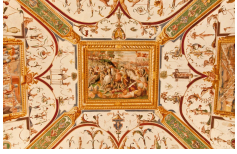
Grotesques motifs by Jacques Androuet du Cerceau, Circa 1550. MET Museum, New York.



Masséot Abaquesne, Pharmacy pot with grotesques, faïence, 16th century, National Ceramic Museum, Sèvres.



Stained-glass with grotesques decor, 16th century, National Museum of the Renaissance, Chateau of Ecouen



Palazzo della Corgna, Room of the battle of Trasimeno, fresco painted between 1574 and 1590 by the workshop of Nicholas Circignani



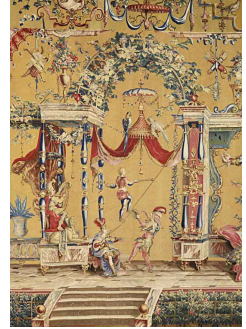
Flask with the emblem of Alfonso II d'Este, Duke of Ferrare, Louvre Museum, Paris.



Cabinet, attributed Nicholas Sageot, Paris, circa 1710. Museum of Decorative Arts, Paris.



Panel with a medallion, 1st half of the 16th century, France. Museum of Decorative Arts, Paris.



Detail of a tapestry with grotesques decor in the style of Le Berain. First half of the 18th century. Beauvais Manufactory. Louvre Museum, Paris.