



The Great Sphinx of Giza, Egypt, ca. 2558-2532 BC.



Decorative panel with symmetrical winged male sphinxes from the palace of Darius I at Susa, 522-486 BC, Louvre Museum, Paris.



Lamassu, or human-headed winged bull, from Dur-Sharrukin, Neo-Assyrian Period, ca. 721-705 BC, University of Chicago Oriental Institute, Chicago.



Archaic funerary sphinx, ca. 570 BC, National Museum of Archeology, Athens.



Oedipus and the Sphinx, Ingres, 1808-1827, oil on canvas, Louvre Museum, Paris.



3

androsphinxcriosphinxhieracosphinx

Hor-em-akhet""

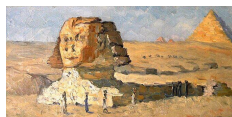
Ishtar

2NimrudKhorsabadlamassulamassu

21750 200
8

6The5·Gustave Moreau

17""18



Egypte 1881: Le Grand Sphinx (The Great Sphinx), Joseph Félix Bouchor (1853-1937), 1881, oil on canvas, Musée du Noyonnais, Noyon.



Sphinx, mid-18th century, La Granja, Spain. At the end of the 17th century, the sphinx became a common figure in European gardens.

Armchair with Sphinx coming from the Queen bedroom, Chateau of Fontainebleau. 19th century.



Oedipus and the Sphinx, Gustave Moreau, 1864, oil on canvas, Metropolitan Museum of Art, New York City.